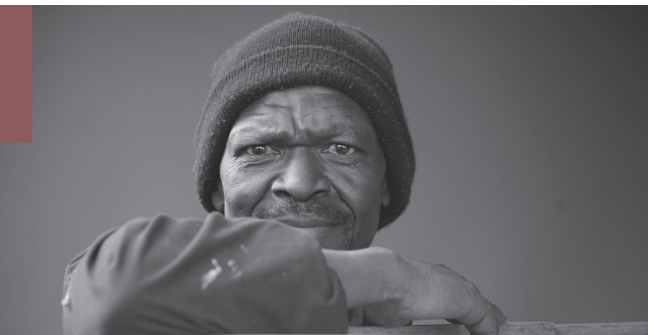


MORE THAN A SHELTER



In one year, the Mission provides..



76,000 meals served to our community



36,000 hours of vocational training



40,000 nights of safe shelter



8,900 hours of classes and essential life skills



7,000 medical and dental services



4,100 hours of one-on-one case management



841 homeless neighbors served

At the Mission, we help people find **hope and healing** by **addressing the deeper, root issues surrounding homelessness and poverty**. Through our Life Recovery Program, our guests are able to rediscovered their **Jeremiah 29:11** and given the tools to successfully live it out.



SHREVEPORT-BOSSIER RESCUE MISSION

901 McNeil Street
Shreveport, LA 71101

318.227.2868

www.SBRescueMission.com



Pastor Larry Otwell

Executive Director & Director of Men's Program

Donna Otwell

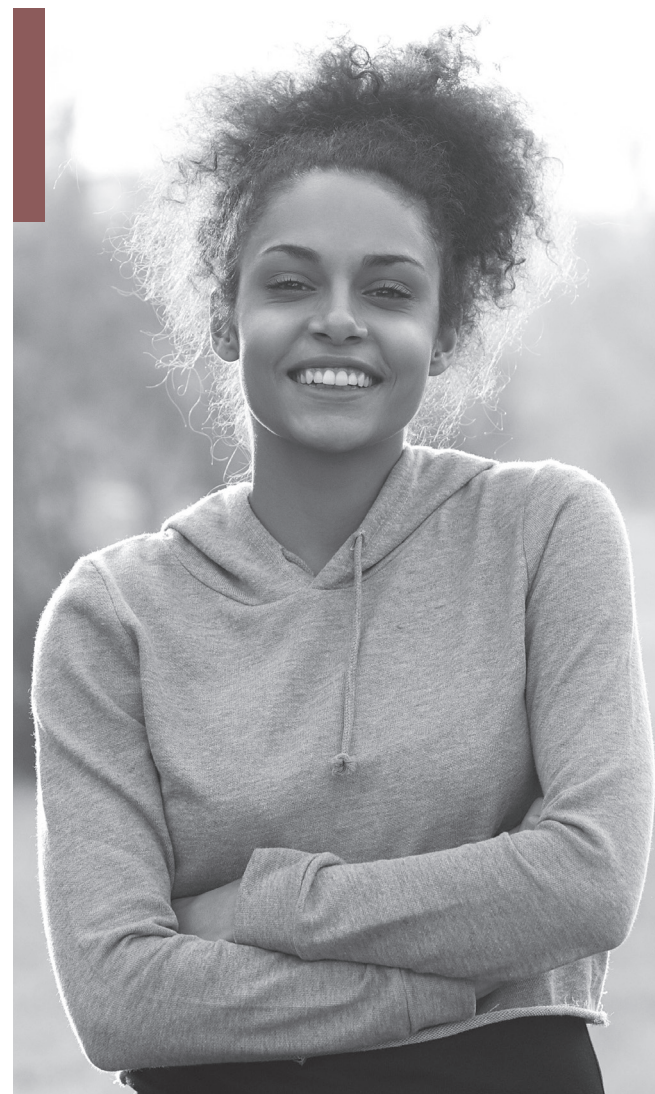
Director of Women & Children's Program

The Shreveport-Bossier Rescue Mission exists to pursue the passion of Jesus Christ to lift up the hungry, homeless, abused and addicted.

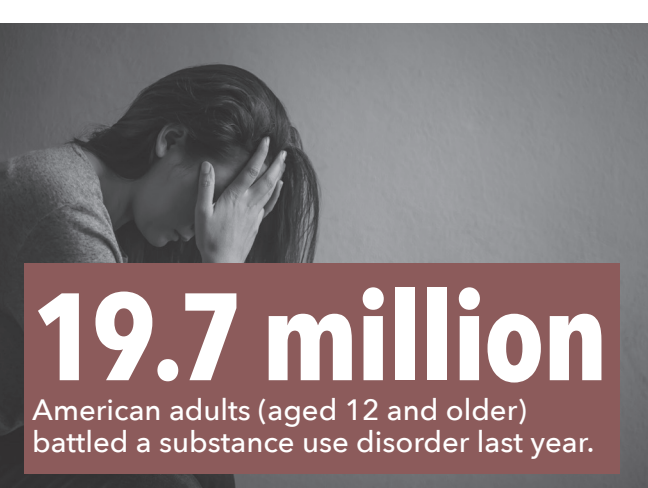
 NEW BEGINNINGS

Ready for the next step?

We're here to help.



SHREVEPORT-BOSSIER RESCUE MISSION
LIFE RECOVERY PROGRAM



19.7 million

American adults (aged 12 and older) battled a substance use disorder last year.

The Genesis Process A New Beginning

WHAT IT IS

The Genesis Process is a recovery model used by the New Beginnings Program. It is a bible based relapse prevention curriculum. Students begin to identify faulty beliefs and replace them with truth from the Word of God. Genesis counselors assist guests in creating individualized plans for relapse prevention.

WHY IT WORKS

The Genesis Process allows the student to turn mistakes into growth, reduce self-sabotaging behaviors and address the root cause of those behaviors.

What the New Beginnings Program has done for our guests..

"I now have my hope back! I know that life will be completely different from now on."

"The Mission saved my life. Without them, I have no idea where I would be."

"Now I have the tools to attack life head on and make a difference. Not only for me but for my entire family!"

Your future starts HERE

Long-Term Programs

NEW BEGINNINGS

The New Beginnings Program is a 12 month long term recovery program. Students reside on-site and receive one-on-one Case Management Vocational Training, have full coursework, and attend large/small group classes.

TRANSITION

The Transition Program is a 6-month program for New Beginnings Program graduates. Graduates receive assistance in finding jobs and permanent housing. Case managers work to ensure their transition back into the community goes smoothly and successfully.

ACTS 1:8 FAMILY

After guests have completed our New Beginnings, we recommend they enroll in our Aftercare Program, Acts 1:8 Family. Our Acts 1:8 Family keeps our past guests connected and engaged with our staff and other guests. The group meets for fellowship, biblical counseling, resources and ongoing encouragement.

HOW WE'RE DIFFERENT

- Christ-centered residential recovery
- Individual case management, biblical counseling, and support
- Referrals to area providers
- Work readiness, vocational training, and community service opportunities
- Free medical and dental care
- Life skills training, anger management, abuse awareness and more
- Career development and job references
- Advocacy program with local court systems

LIFE RECOVERY PROGRAM

re • cov • er • y (Noun)

1. a return to a normal state of health, mind, or strength.
2. the action or process of regaining possession or control of something stolen or lost.

Our Life Recovery Program exists to give each man and woman that comes through our doors with the opportunity to regain what they have lost. The Life Recovery Program provides a total recovery **through spirit, soul, and body. 1 Thes 5:23**

OTHER PROGRAMS

Our Life Recovery has multiple programs within it. Other programs we offer include:

- Emergency Shelter Program
- Fresh Start Program
- Employed Program



- For medical emergencies please call **911**
- For times of crisis and help meeting every day needs, call **211**. Callers will be given information about health and human services available in their community.
- For more information about coming to the Mission, call **(318) 227-2868**